

UK Research
and Innovation



UKRI GCRF Global Interdisciplinary Research Hubs

Building global research
communities to develop innovative
and sustainable solutions for
international development



About UKRI

UK Research and Innovation (UKRI) works in partnership with universities, research organisations, businesses, charities, and the UK governments to create the best possible environment for research and innovation to flourish. We aim to maximise the contribution of each of our component parts, working individually and collectively. We work with our many partners to benefit everyone through knowledge, talent and ideas.

Operating across the whole of the UK with a combined budget of more than £7 billion, UK Research and Innovation brings together the seven Research Councils, Innovate UK and a new organisation, Research England.

www.ukri.org

 @UKRI_News

 @GCRF

About GCRF

The Global Challenges Research Fund (GCRF) is a £1.5 billion fund which supports cutting edge research and innovation that addresses the global issues faced by developing countries.

GCRF harnesses the expertise of the UK's world-leading researchers, focusing on: funding challenge-led, disciplinary and interdisciplinary research; strengthening capability for research, innovation and knowledge exchange; and providing an agile response to emergencies where there is an urgent research or on-the-ground need.

GCRF forms part of the UK Government's Official Development Assistance (ODA) commitment and is overseen by the Department for Business, Energy and Industrial Strategy (BEIS) and delivered through UKRI, the UK Academies, the UK Space Agency and funding bodies.

Foreword

**Professor Andrew Thompson,
UKRI Executive Champion
for International**



Welcome to the GCRF Interdisciplinary Research Hubs – launched to tackle some of the world's greatest challenges.

The sheer scale and ambition of these Hubs is what makes them so exciting. They enable us to deliver a coordinated global response with UK researchers working in partnership with governments, NGOs, community groups, international agencies and researchers across developing countries. Each Hub has the potential to transform the quality of life for many people throughout the world and safeguard our planet for future generations.

Research is vital for global development, helping us to understand where we are today, what we could achieve in the future and providing innovative tools, strategies and policies to achieve these goals. But UKRI knows from experience that success in development requires a depth of understanding that can only be achieved through equitable partnership and engagement of diverse stakeholders such as industrial sectors, civil society groups, NGOs and governments.

We looked to the United Nations Agenda for Sustainable Development and its Sustainable Development Goals (SDG's) to provide a framework for improving global health, dignity and prosperity by 2030. But there are additional, seemingly intractable challenges such as conflict, forced displacement, climate change and growing inequalities which add complexity to resolving the world's problems and can even reverse development.

So the call for GCRF Interdisciplinary Research Hubs asked for transformative research approaches to address intractable development challenges and we had an extraordinary response. This has led to identifying these 12 multi-institutional, Interdisciplinary Research Hubs and enabled UKRI to secure the all-important funding from UK Government.

These Hubs are among the most ambitious investment the UK has to date made in international development research. They provide a framework for the wider GCRF portfolio, position the UK as a leader in development research and promote the dignity and prosperity for some of the most disadvantaged and hardest to reach people on our planet.

In addition to championing GCRF, Professor Andrew Thompson is Executive Chair of UKRI's Arts and Humanities Research Council (AHRC).

Now more than ever the world is facing challenges that need a collective response. We are living in a globally inter-connected world where everything from climate change, pandemics and employment to conflict, water security and mass migration are linked and impact us all. Our answer to some of the world's most pressing challenges is 12 new Global Interdisciplinary Research Hubs which seek to develop creative and sustainable solutions to make the world, and the UK, safer, healthier and more prosperous.

The UK is an established world leading knowledge economy with a reputation for investing in the brightest minds to deliver large-scale, pioneering and ambitious research and innovation. These Hubs continue that approach, working over the next five years with researchers, governments, international agencies and NGOs on the ground, in developing countries and around the globe, to address some of the most complex development challenges.

The Hubs are focussing on the intractable development challenges which have proved resistant to change in the past and cannot be solved by one single organisation, discipline or country alone. Working in partnership, they will share knowledge and expertise to develop innovative, sustainable solutions at a local, national and international scale.

The UKRI GCRF Global Interdisciplinary Research Hubs are an ambitious approach but a necessary one as we seek out sustainable solutions to create fair and equitable growth for everyone.

KEY FACTS

12 global interdisciplinary research Hubs

85 countries

550 researchers

400 unique partner organisations

£200M investment*

*The financial figures in this booklet refer to the investment from the UK Government. In addition to this funding, all international partners are making significant cash and in-kind contributions.

The 12 Hubs

- UKRI GCRF Achievement for Africa's Adolescents Hub
- UKRI GCRF Accountability for Informal Urban Equity Hub
- UKRI GCRF Action Against Stunting
- UKRI GCRF Gender, Justice and Security Hub
- UKRI GCRF Living Deltas Hub
- UKRI GCRF One Health Poultry Hub
- UKRI GCRF One Ocean Hub
- UKRI GCRF South Asian Nitrogen Hub
- UKRI GCRF South-South Migration, Inequality and Development Hub
- UKRI GCRF Trade, Development and the Environment Hub
- UKRI GCRF Urban Disaster Risk Hub
- UKRI GCRF Water Security and Sustainable Development Hub



**Professor Helen Fletcher,
UKRI Director of International
Development and GCRF Challenge
Leader in Global Health**

“

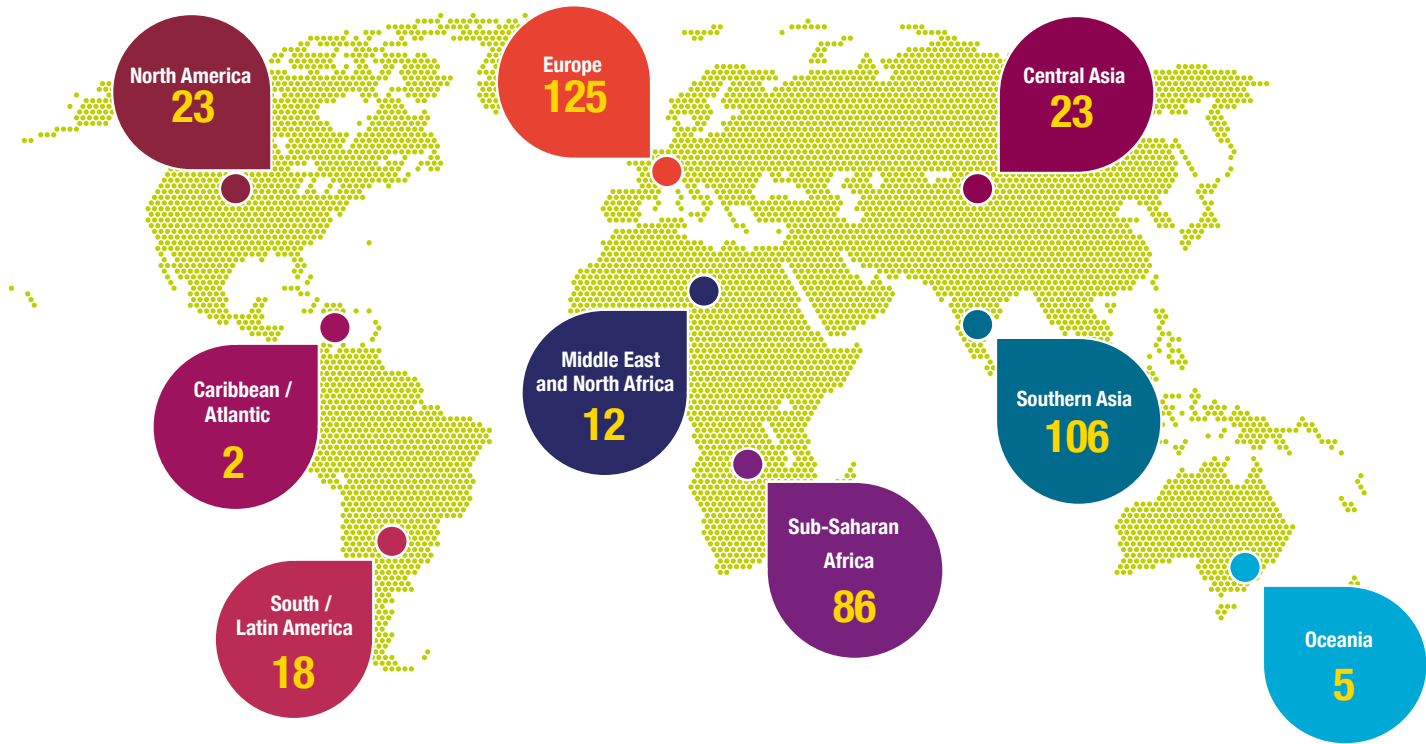
The power of the Hubs is their inclusive nature. Supported by UKRI, experts from different organisations and backgrounds throughout the world are uniting and working together to address the challenges faced by some of the most vulnerable people on the planet. It's a huge undertaking, especially as we have a responsibility to work ethically, safely and equitably with all our partners', particularly those in developing countries. But the Hubs are a fantastic opportunity to be agents of positive change and it's a very exciting time for everyone involved.”

UN Sustainable Development Goals



The UKRI GCRF Interdisciplinary Research Hubs will contribute to realising the ambitions of the UK Aid Strategy and to progressing the global effort to address the United Nations Sustainable Development Goals

Global reach of the Hubs



This map shows the number of unique organisations that are our partners on the 12 Hubs. Also the regions they are based in

Accelerating Achievement for Africa's Adolescents Hub

■ By 2050, Africa will be home to half a billion teenagers. Despite their incredible creativity and potential, many of these young people will be trapped in a cycle of poverty, violence, low education and poor health. This Hub will work with policy makers, NGOs and adolescents themselves to discover which combinations of services can most efficiently and cost-effectively help adolescents achieve their potential. By testing different combinations such as malaria prevention, business skills and violence prevention, this Hub will identify 'accelerator' packages to boost nutrition, health, schooling, employment, gender equality and safety for teenagers across Africa.

“

My name is Noxolo and I am a member of the Hub's Teen Advisory Group in South Africa. As a young person growing up in South Africa, I have faced a lot of challenges. I believe that achieving the Sustainable Development Goals will be a great help, not only for me but other young people like me. We want the best chance to be safe, educated, healthy and successful. Thank you.”

**Miss Noxolo Myeketsi, Adolescent Advisory Group
South Africa**

KEY FACTS

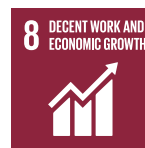
£18.5M

15 partner countries

56 partner organisations

Lead organisation: University of Oxford

Principal Investigator: Professor Lucie Cluver



Geographical focus: Africa

Contact details: Maria Michalopoulou
maria.michalopoulou@admin.ox.ac.uk

Partner Organisations

African Academy of Sciences, Kenya
 Africa Population Health Research Centre, Kenya
 African School of Economics, Benin
 African Union Development Agency, South Africa
 Agency for Research and Development Initiative, South Sudan
 Bill & Melinda Gates Foundation, USA
 Busara Centre for Behavioural Economics, Kenya
 City of Cape Town, South Africa
 Clowns Without Borders South Africa
 Coalition for Children Affected by AIDS, UK
 GiveDirectly, Kenya, Uganda, Rwanda
 Government of Kenya
 Government of Lesotho
 Government of Sierra Leone
 Government of South Africa
 Government of South Sudan
 Government of Tanzania
 Government of Zambia
 Harambee Youth Employment Accelerator, South Africa
 Innovations for Poverty Action, Kenya
 International HIV/AIDS Alliance, UK
 International Rescue Committee, USA
 Jameel Poverty Action Lab, USA
 Joint United Nations Programme on HIV/AIDS, Switzerland
 Kenya Medical Research Institute / Wellcome Trust Research Programme
 Local Government of Mpumalanga, South Africa
 London School of Hygiene and Tropical Medicine, UK
 Medical Research Council, Uganda
 New York University, USA
 North West University, South Africa
 Paediatric Adolescent Treatment Africa, South Africa
 Pan American Health Organisation
 Raising Voices, Uganda
 Sexual Violence Research Initiative, South Africa
 Stellenbosch University, South Africa
 Tanzanian National Institute for Medical Research - Mwanza Research Centre
 The Global Fund, Switzerland
 United Nations Development Programme, International
 United Nations International Children's Emergency Fund, International
 United Nations Population Fund, International
 United States Agency for International Development, International
 United Nations University - International Institute for Global Health, Malaysia
 United States Agency for International Development – President's Emergency Fund for AIDS Relief (USAID-PEPFAR)
 University of Cape Town, South Africa
 University College London, UK
 University of Dodoma, Tanzania
 University of Edinburgh, UK
 University of Ibadan, Nigeria
 University of KwaZulu-Natal, South Africa
 University of Oxford, UK
 University of the Western Cape, South Africa
 University of the Witwatersrand, South Africa
 University of Zambia
 UN Women
 World Food Programme
 World Health Organisation, Switzerland



©Inge Wessels

Accountability for Informal Urban Equity Hub

■ Over half of the world's population live in cities and one in three of these live in informal settlements in low and middle-income countries. But inadequate access to services and limited opportunities to shape their environment lead to a wide range of physical and mental health risks. This Hub will support marginalised people to claim their health rights and helps build government accountability and capacity through evidence-based research to inform policy change at all levels.

“

We are very excited about this Hub. This partnership aligns directly with our work in knowledge co-production, aiming to build the research and analysis capacity of urban stakeholders in Freetown, prompting evidence-based dialogue with stakeholders at different levels and sectors to increase accountability for informal settlement dwellers.”

Dr Joseph MacCarthy, Director, Sierra Leone Urban Research Centre, Sierra Leone

KEY FACTS

£12.1M

4 partner countries

11 partner organisations

Lead organisation: Liverpool School of Tropical Medicine

Principal Investigator: Professor Sally Theobald



Geographical focus: East Africa, West Africa and South Central Asia

Contact details: Dr Rachel Tolhurst
rachel.tolhurst@istmed.ac.uk

Partner Organisations

African Population and Health Research
Centre, Kenya

BRAC University, Bangladesh

Institute of Development Studies, UK

Liverpool School of Tropical Medicine, UK

LVCT Health, Kenya

Shack / Slum Dwellers International, India
and international

Sierra Leone Urban Research Centre

Society for the Promotion of Area Resource
Centers (SPARC), India

The George Institute for Global Health, India

University of Glasgow, UK

University of Sierra Leone



©Dolf te Lintelo

Action Against Stunting Hub

■ Progress against the global goal to reduce child stunting by 40 per cent by 2030 has stalled. To accelerate gains and help millions of children reach their potential there is an urgent need to better understand the factors, synergies and relationships that cause stunting. This Hub will work across disciplines and communities to build up a comprehensive research picture of the ‘whole child’, enabling joined-up, child-centred interventions.

“

Senegal has made reducing malnutrition a pillar of its Health and Poverty Reduction program. As a partner of the Ministry of Health, the Université Cheikh Anta Diop de Dakar brings its technical expertise to these objectives. This Hub is a great opportunity that will help Senegal achieve these important goals quickly.”

Prof Babacar Faye. Head of the Parasitology Department, Faculty of Medicine. Université Cheikh Anta Diop de Dakar.

KEY FACTS

£18.2M

6 partner countries

17 partner organisations

Lead organisation: London International Development Centre and London School of Hygiene & Tropical Medicine

Principal Investigator: Professor Claire Heffernan



Geographical focus: West Africa, South Central Asia and South East Asia

Contact details: Professor Claire Heffernan
claire.heffernan@lids.ac.uk

Partner Organisations

Birkbeck University of London, UK
Digital Green, India
Indian Institute of Public Health Gandhinagar
International Initiative for Impact Evaluation
(3ie), International
International Livestock Research
Institute, Kenya
Liverpool School of Tropical Medicine, UK
London School of Hygiene & Tropical
Medicine, UK
National Institute of Nutrition, India
Royal Veterinary College, UK
SOAS, University of London, UK
Science Made Simple, UK
Southeast Asian Ministers of Education
Regional Centre for Food and
Nutrition, Indonesia
University of Aberdeen, UK
University of Brighton, UK
Université Cheikh Anta Diop de
Dakar, Senegal
UCL Institute of Education, UK
World Agroforestry Centre, Kenya



©Sneha Krishnan

Gender, Justice and Security Hub

■ Conflict and gender-based violence have devastating, long-term consequences on individuals, families and communities. They also severely hamper the successful delivery of development goals internationally. This Hub seeks to advance sustainable peace by developing an evidence-base around gender, justice and inclusive security in conflict-affected societies. Working with international partners, it will expand research capacity and interdisciplinary research and connect with leading ambassadors for gender justice to translate insights into ongoing actions that improve lives.

“

It gives me great pleasure to know that I will make a contribution to the UKRI GCRF Gender, Justice and Security Hub. This platform will enable me to bring narratives and perspectives from Uganda to be part of this global conversation on gender equality, justice and security.”

Dr Josephine Ahikire, Makerere University,
Kampala Uganda

KEY FACTS

£15.2M

17 partner countries

44 partner organisations

Lead organisation: London School of Economics
and Political Science

Principal Investigator: Professor Christine Chinkin



Geographical focus: South America, West Africa, East Africa,
Middle East, South Central Asia and South East Asia

Contact details: Zoe Gillard
z.gillard@lse.ac.uk

Partner Organisations

Amani Institute Uganda
Association of War Affected Women, USA
Barzani Charity Foundation, Iraq
Child to Child, UK
Committee on the Administration of Justice, UK
De La Salle University, Philippines
Dejusticia, Colombia
Gulu University, Uganda
Hayat Rased, Jordan
Hunter College CUNY, USA
Imperial War Museum, UK
International Centre for Ethnic Studies, Sri Lanka
International Crisis Group, Belgium
Kadir Has University, Turkey
King's College London, UK
Laajverd, Pakistan
Legal Aid for the Victims of Rape and Sexual Harassment, UK
London School of Economics & Political Science, UK
London School of Hygiene and Tropical Medicine, UK
Makerere University, Uganda
Mena Organization for Services Advocacy Integration & Capacity building, Jordan
Middlesex University, UK
Myanmar Institute of Gender Studies, Myanmar (Burma)
National College of Arts, Pakistan
New York University, USA
Paiman Alumni Trust, Pakistan
People's Development Organization, Pakistan
Society for the Protection of the Rights, Pakistan
The American University of Iraq Sulaima, Iraq
The American University of Kurdistan, Iraq

Timap for Justice, Sierra Leone
Tulane University, USA
University of Arkansas at Little Rock, USA
University of Colombo, Sri Lanka
University of Denver, USA
University of East London, UK
University of Sydney, Australia
University of the Andes – Colombia
University of Ulster, UK
Warvin Foundation for Women's Issues, Iraq
Wayamo Foundation, Germany
Women for Peace and Participation, Afghanistan and UK
Women's Legal Assistance, Iraqi-Kurdistan
Yakjah Peace and Reconciliation Network, India



Living Deltas Hub

■ River deltas comprise just one per cent of global landscapes yet support over half a billion people. Deltas are vital social-ecological systems and global food-baskets, but the terrain and the livelihoods of those who rely on them are under threat from human exploitation, environmental degradation and climate change. Focusing on three deltas in Asia, this Hub will operate on a model of equitable partnership with the delta-dwellers and the research community working together to develop new knowledge and policies. The aim is to safeguard delta futures through more resilient communities and sustainable development.

“

It is very exciting that this Hub will be active in the Red River Delta - the cradle of the wet rice civilization of Vietnam. The Hub's unique natural-cultural heritage emphasis provides an excellent opportunity for communities, researchers and policymakers to work together towards sustainable development in Vietnam, by co-creating livelihood solutions based on the tangible and intangible cultural values of our delta landscape.”

Dr Nga Dao, Department of Social Science,
York University, Canada

KEY FACTS

£15.3M

13 partner countries

39 partner organisations

Lead organisation: Newcastle University

Principal Investigator: Dr Andrew Large



Geographical focus: South and South East Asia

Contact details: Dr Andrew Large
andy.large@newcastle.ac.uk

Partner Organisations

An Giang University, Vietnam
Asian Institute of Technology, Thailand
Bangladesh Environmental Lawyers Association, Bangladesh
Bangladesh University of Engineering and Technology
Bengal Engineering College, India
Can Tho University, Vietnam
Centre for Environmental and Geographic Information Services, Bangladesh
Centre for Environmental Monitoring, Vietnam
Environment Administration
Centre for Water Resources Conservation and Development, Vietnam
Durham University, UK
Hoa Sen University, Vietnam
Indian Institute of Engineering Science and Technology
Institute of Policy and Strategy for Agriculture and Rural development, Vietnam
International Centre for Diarrhoeal Disease Research, Bangladesh
International Council of Museums, UK
International Union for Conservation of Nature and Natural Resources, Switzerland
Jadavpur University, India
Lancaster University, UK
Local Government Engineering Department, Bangladesh
Loughborough University, UK
National University of Singapore
Nature Conservation Management, Vietnam
Newcastle University, UK
Northumbria University, UK
Oral Testimony Works, UK
Stockholm Environment Institute, Sweden
The Nature Conservancy, USA
United Nations University, Germany
University of California, Irvine, USA

University of Glasgow, UK
University of Nottingham, UK
Uttaran (Transition), Bangladesh
Vietnam Academy of Science & Technology
Vietnam Atomic Energy Institute
Vietnam National University
Vietnam Ministry of Natural Resources
Vietnamese Women's Museum
Wetlands International, The Netherlands
York University, Canada



©Gerard Corsane

One Health Poultry Hub

■ Population growth is driving global demand for safe, low-cost poultry meat and eggs but rapid intensification creates conditions for diseases. This Hub explores how to meet rising demand while minimising the risk to public health. It will study how intensification increases risk of infectious disease and antimicrobial resistance, why certain processes and behaviours are risky and establish when and where to test interventions for disease control. Working with strong networks of local, regional and global stakeholders, the evidence generated will be put to immediate use.

“

Sri Lanka is nearly self-sufficient with poultry products but needs to improve product quality to comply with international food safety standards. Our Hub will provide a golden opportunity for us to share knowledge and technical know-how among collaborative countries while providing the benefit of capacity building to improve quality standards assuring food safety for consumers.”

Dr Ruwani Kalupahana, Faculty of Veterinary Medicine and Animal Science, University of Peradeniya, Sri Lanka

KEY FACTS

£18.1M

11 partner countries

27 partner organisations

Lead organisation: Royal Veterinary College

Principal Investigator: Professor Fiona Tomley



Geographical focus: South-Central Asia and South-East Asia

Contact details: Professor Fiona Tomley
ftomley@rvc.ac.uk

Partner Organisations

Anand Agricultural University, India
Animal and Plant Health Agency, UK
Bangladesh Livestock Research Institute
Chatham House, UK
Chittagong Veterinary and Animal Sciences
University, Bangladesh
Christian Medical College Vellore, India
CIRAD - French Agricultural Research Centre
for International Development
City University of Hong Kong
Food and Agriculture Organization of the
United Nations (FAO), International
Government of Gujarat, India
Institute of Development Studies, UK
Institute of Epidemiology, Disease
Control and Research, Bangladesh
Jawaharlal Nehru University, India
London School of Hygiene and
Tropical Medicine, UK
Nanyang Technological University, Singapore
National Institute of Animal
Sciences Vietnam
National Institute of Hygiene And
Epidemiology, Vietnam
National Veterinary Research Institute,
Vietnam
Royal Veterinary College, UK
Tamil Nadu Veterinary and Animal
Sciences University, India
The Pirbright Institute, UK
Université Libre de Bruxelles, Brussels
University of Oxford, UK
University of Peradeniya, Sri Lanka
University of Queensland, Australia
Veterinary Research Institute Sri Lanka
Vietnam National University of Agriculture



©FAO ECTAD Bangladesh

One Ocean Hub

■ We are entirely reliant upon the ocean but over-exploitation, competing uses, pollution and climate change are pushing ocean ecosystems towards a tipping point. This Hub will bridge current disconnects across law, science and policy to empower local communities, women and youth to co-develop research and solutions. The aim is to predict, harness and share equitably environmental, socioeconomic and cultural benefits from ocean conservation and sustainable use. The Hub will also identify hidden trade-offs between more easily monetized fishing or mining activities and less-understood values of the ocean's deep cultural role, function in the carbon cycle, and potential in medical innovation.

“

We are delighted to work collaboratively across disciplines with other committed organisations towards achieving the Sustainable Development Goals. This Hub will provide support in complex issues at national and regional level within a respectful partnership and will help secure the health and wellbeing of the ocean and vulnerable communities for generations to come.”

Dr Ann Cheryl, Vice Dean Learning and Teaching,
University of the South Pacific

KEY FACTS

£18.2M

11 partner countries

56 partner organisations

Lead organisation: University of Strathclyde

Principal Investigator: Professor Elisa Morgera



Geographical focus: East Africa, West Africa, Southern Africa, Oceania and the Caribbean

Contact details: Professor Elisa Morgera
elisa.morgera@strath.ac.uk

Partner Organisations

African Technology Policy Studies Network, Kenya
 African Woman for Science and Engineering, Kenya
 Birdlife International, UK
 British Geological Survey, UK
 Centre for Environment, Fisheries and Aquaculture Science, UK
 ClientEarth, Belgium, Poland, UK
 Le Centre national de la recherche scientifique (CNRS), France
 Commonwealth Secretariat, UK
 Convention on Biological Diversity, Brazil
 Del-York International Limited, Nigeria
 Federal Institute of Industrial Research, Nigeria
 Fisheries & Marine Resources Namibia
 Fisheries Commission Accra, Ghana
 Food and Agriculture Organization of the United Nations, International
 Glasgow School of Art, UK
 Heriot-Watt University, UK
 Indigenous and Community Conserved Areas Consortium, Philippines
 INSERM French National Institute of Health and Medical Research, France
 Intergovernmental Oceanographic Commission-United Nations Educational, Scientific and Cultural Organization, USA
 International Institute for Environment and Development, UK
 Kenyatta University, Kenya
 Lagos Chamber of Commerce & Industry, Nigeria
 Maseno University, Kenya
 Mongabay Organisation, USA
 National Oceanography Centre, UK
 Nelson Mandela University, South Africa
 Nigerian Environmental Society
 Organization of American States, USA
 Research Institute for Marine Fisheries, India
 Rhodes University, South Africa
 Scottish Association for Marine Science, UK
 Secretariat of the Pacific Regional Environment Programme, Samoa
 South African Environmental Observation Network, South Africa
 South African Government
 South African National Biodiversity Institute
 The Network of Regional Governments for Sustainable Development, Belgium
 The Jackson Group, USA
 TVC Communications, USA
 United Nations Development Programme, International
 United Nations Division for Ocean Affairs and the Law of the Sea, International
 United Nations Environment Programme/ Convention on the Conservation of Migratory Species of Wild Animals, International
 United Nations Environment Programme, International
 United Nations Institute for Training, Switzerland
 University of Cape Coast, Ghana
 University of Cape Town, South Africa
 University of Edinburgh, UK
 University of Education Winneba, Ghana
 University of Namibia
 University of Plymouth, UK
 University of Southampton, UK
 University of Seychelles
 University of Strathclyde, UK
 University of the South Pacific, Fiji
 University of the West Indies
 West African Science Service Center on Climate Change and Adapted Land Use, Ghana
 World Wide Fund for Nature, UK



©Cristina Mittermeier, Sealegacy

South Asian Nitrogen Hub

■ Humans have massively altered flows of nitrogen on our planet, leading to both benefits for food production and multiple threats to the environment. The result is a web of interlinked problems as nitrogen losses from agriculture and fossil fuel combustion cause air, climate and water pollution. This Hub will develop a more coherent picture of the nitrogen cycle. It will quantify nitrogen flows and impacts and explore how to improve nitrogen management in agriculture and the wider circular economy and reduce the need for synthetic fertilizers by making better use of manure, urine and natural nitrogen fixation processes.

“
High doses of fertilizer input of nitrogen to agriculture, combined with low nitrogen-use efficiency mean that research on nitrogen pollution must be a priority for South Asia. This is emphasised by the scale of nitrogen subsidies across South Asia at around \$10 billion dollars per year. This means that better nitrogen management offers a win-win for economy and environment.”

Prof. Tapan Adhya, Hub Co-Director for Science,
Kalinga Institute of Industrial Technology,
Bhubaneswar, India

KEY FACTS

£17.5M

9 partner countries

52 partner organisations

Lead organisation: NERC Centre for Ecology
& Hydrology

Principal Investigator: Professor Mark Sutton



Geographical focus: South Central Asia

Contact details: Dr Clare Howard
sanh-office@ceh.ac.uk

Partner Organisations

Akhuwat, Pakistan
Aligarh Muslim University, India
Bangabandhu Sheikh Mujibur Rahman
Agricultural University, Bangladesh
Bangladesh Rice Research Institute
BASF, Germany
Bill & Melinda Gates Foundation, USA
Centre for Marine Living Resources &
Ecology, India
Cool Farm Alliance, UK
CSIR National Institute of Oceanography, India
Government of India
Government of Pakistan
Government of Sri Lanka
Guru Gobind Singh Indraprastha
University, India
ICAR-Indian Agricultural Research Institute
ICAR-Indian Council of Agricultural Research
ICMAM Project Directorate, NIOT
Campus, India
ICAR-National Rice Research Institute, India
Indian Institute of Tropical Meteorology
International Union for Conservation of Nature
and Natural Resources, Sri Lanka
IORA Ecological Solutions, India
Jawaharlal Nehru University, India
Kalinga Institute of Industrial Technology
Bhubaneswar University, India
Kathmandu University, Nepal
London School of Hygiene and Tropical
Medicine, UK
Marine Environment Protection Authority,
Sri Lanka
Moredun Research Institute, UK
National Centre for Sustainable Coastal
Management, India
National Fertilizer Development
Centre, Pakistan
National Oceanography Centre, UK
National Physical Laboratory, India
NERC Centre for Ecology and Hydrology, UK
Nourish Scotland, UK
Plymouth Marine Laboratory, UK
Rothamsted Research, UK
Royal Botanic Garden Edinburgh, UK
Royal University of Bhutan, Bhutan
Scotland's Rural College, UK
Society for Conservation of Nature, India
South Asia Co-Operative Environment
Programme, Sri Lanka
Sustainable India Trust, India
TERI University, India
The Maldives National University, Maldives
The Scottish Government, UK
Tribhuvan University, Nepal
United Nations Environment Programme
(DEPI), International
University of Aberdeen, UK
University of Agriculture Faisalabad, Pakistan
University of Bristol, UK
University of Edinburgh, UK
University of Kabul, Afghanistan
University of Peradeniya, Sri Lanka
University of Rajshahi, Bangladesh



©Mark Sutton

South-South Migration, Inequality and Development Hub

■ Migration between the countries of the Global South accounts for nearly half of all international migration. It is 70 per cent in some places, potentially contributing to delivery of the Sustainable Developmental Goals by creating opportunities for work and for the transfer of resources, knowledge and skills between developing countries. The developmental benefits of migration are undermined by inequalities in access to the opportunities that South-South migration can bring and by limited and unequal access to rights for migrants and their families. This Hub will work with academics, artists, community organisers, international organisations and policy makers to develop approaches which reduce inequalities associated with South-South migration.

“

This Hub will be an important incubator of bottom-up solutions that will drive sociopolitical change regarding migration at the local, national and cross-border levels. Its interdisciplinary approach and institutionally collaborative framework will foster opportunities for co-learning while developing new modes of engagement between migrants, academics and policy makers in the Global South.”

Professor Herns Marcelin, Director, InterUniversity Institute for Research and Development, Haiti

KEY FACTS

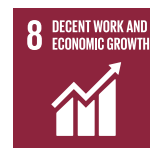
£18.8M

19 partner countries

27 partner organisations

Lead organisation: Coventry University

Principal Investigator: Professor Heaven Crawley



Geographical focus: South America, Caribbean, Africa, Middle East and East, South East and South Central Asia

Contact details: Professor Heaven Crawley
heaven.crawley@coventry.ac.uk

Partner Organisations

American University in Cairo, Egypt
China Agricultural University
College of Development Studies, Nepal
Coventry University, UK
Federal University of Amapá, Brazil
Institute for Governance, Development and Prospects, Ivory Coast
International Labour Organization, Switzerland
International Organization for Migration, Switzerland
Interuniversity Research Centre on Sustainable Development, Italy
Higher Institute of Population Sciences, Burkina Faso
London School of Hygiene and Tropical Medicine, UK
Monash University Malaysia
Organisation for Economic Co-operation and Development, France Overseas Development Institute, UK
Peace and Development Centre, Ethiopia
Peace Research Institute Oslo, Norway
Royal Holloway, University of London, UK
Samuel Hall, UK
The School of Oriental and African Studies, University of London, UK
United Nations Development Programme, International
United Nations Human Rights, International
United Nations Research Institute for Social Development, International
University of Ghana
University of Glasgow, UK
University of Jordan
University of Manchester, UK
University of the Witwatersrand, South Africa
University of West London, UK



©Karen Gordon

Trade, Development and the Environment Hub

■ Thousands of species globally are threatened with extinction and there has been a swift decline in biodiversity and ecosystem resilience. People are being kept in poverty as trade in wildlife and agricultural commodities from low and middle-income countries has rapidly increased. This Hub includes economists, trade modellers, political scientists, ecologists, development scientists, large companies, UN bodies and non-governmental organisations who will work together across supply chains to influence trade related policy and practice. It will also produce research to help ensure that trade becomes a driver of positive change in the world, with biodiversity loss halted and people permanently lifted out of poverty.

“

This Hub encompasses some of the most engaging and hands-on research that will help us move to a greener trading system in Africa. It will help develop those needed skills in the flow of goods, services, and technology that so many careers need, and so many researchers in sub-Saharan Africa lack. Our participation in this process is a wonderful opportunity to be part of that engine for inclusive economic growth and poverty reduction in sub-Saharan Africa. It will truly be an exciting experience.”

Dr. Kevin Njabo, International Institute of Tropical Agriculture, Cameroon

KEY FACTS

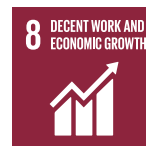
£18.2M

15 partner countries

51 partner organisations

Lead organisation: UN Environment
World Conservation
Monitoring Centre

Principal Investigator: Professor Neil Burgess



Geographical focus: South America, Central Africa, East and West Africa and East and South-East Asia

Contact details: Professor Neil Burgess
neil.burgess@unep-wmc.org

Partner Organisations

AB Sustain, UK
Asda, UK
Asian Institute of Technology, Thailand
Beijing Normal University, China
Bogor Agricultural University, Indonesia
BonSucro, UK
Brazilian Center of Analysis and Planning, Brazil
Centre for Conservation and Sustainability Science (CSRio), Pontifical Catholic University of Rio de Janeiro Brazil
Centre for International Forestry Research (CIFOR), Indonesia
Centre for Mountain Ecosystem Studies, Kunming Institute of Botany, Chinese Academy of Sciences, China
Chatham House, UK
China chamber of commerce of metals, minerals & chemicals importers & exporters
Congo Basin Institute, Cameroon
Council for Scientific and Industrial Research (CSIR), South Africa
École régionale post-universitaire d'aménagement et de gestion intégrés des forêts tropicales, University of Kinshasa, Democratic Republic of the Congo
Experts in Sustainable Forest and Agricultural Advice (Efeca), UK
Fundação de Estudos Agrários Luiz de Queiroz, Brazil
Imaflora, Brazil
Ingredion
International Bamboo and Rattan Organisation, China
International Institute for Applied Systems Analysis, Austria
International Institute for Market Research, Chinese Academy of International Trade and Economic Cooperation, China
International Institute for Sustainability, Brazil
ISEAL, UK
Kering, France
London School of Economics, UK
Luc Hoffmann Institute, Switzerland
Mars, UK
Research Institute for Tropical Ecology, Gabon
Royal Botanic Garden Edinburgh, UK
Sokoine University of Agriculture, Thailand
Stockholm Environment Institute, Sweden
UN Environment Finance Initiative, International
UN Environment Trade Hub, International
UNEP-WCMC, UK
University College London, UK
University of Cambridge - CISL and Zoology, UK
University of Indonesia, Indonesia
University of Kent, UK
University of Lampung, Indonesia
University of Oxford, UK
University of Reading, UK
University of Southampton, UK
University of Stirling, UK
University of York, UK
Wageningen University, Netherlands
Wildlife Conservation Society, USA
World Agroforestry Centre (ICRAF), Indonesia
World Resources Institute, USA
WWF-UK, UK
WWF-Br, Brazil



Urban Disaster Risk Hub

■ Rapid urbanisation presents a time-limited global opportunity to embed disaster risk management in urban development especially when you consider 60 per cent of the area expected to be urban by 2030 is yet to be built. This Hub will work with international agencies to bring disaster risk management to the centre of global urban policy and practice, strengthening the voice and capacity of the urban poor. The Hub will work across Quito, Nairobi, Kathmandu and Istanbul. Bringing together leading researchers with inspiring community and government leaders, the Hub will work at an unprecedented scale to deliver real impact through interdisciplinary research.

“

Disaster risk in the cities is ever growing due to planned and unplanned development that increases both exposure and vulnerability of populations. This Hub will strengthen multi-hazard risk assessment to help the decision makers in Kathmandu precisely see the drivers of the risk, and help to identify geographical areas posing risk now and in future development. It will help decision makers to identify and prioritize development options that reduce risk rather than aggravate it and vastly improve development decisions in Kathmandu.”

Gehendra Gurung, Practical Action in Kathmandu

KEY FACTS

£17.6M

12 partner countries

54 partner organisations

Lead organisation: University of Edinburgh

Principal Investigator: Professor John McCloskey



Geographical focus: South America, East Africa, Middle East and South Central Asia

Contact details: Professor John McCloskey
John.McCloskey@ed.ac.uk

Partner Organisations

African Centre for Technology Studies, Kenya
Architects Association of Ecuador
Asian Disaster Preparedness Center, Thailand
British Geological Survey, UK
Bogazici University, Turkey
Center for Urban Research & Innovations, Kenya
College of Civil Engineers of Pichinc, Ecuador
Dask Istanbul, Turkey
Disaster and Emergency Management Authority, Turkey
Global Network of Civil Society Organisations for Disaster Reduction, UK
International Center for Numerical Methods in Engineering, Spain
Indian Institute for Human Settlements
Institute of Development Studies, UK
Institute of Engineering, UK
International Institute for Environment and Development, UK
King's College London, UK
Kounkuey Design Initiative, USA
Latin American Faculty of Social Sciences, Ecuador
Leeds Beckett University, UK
LUMANTI Support Group for Shelter, Nepal
Makerere University, Uganda
Met Office, UK
Middle East Technical University, Turkey
National Disaster Risk Reduction Centre, Nepal
National Polytechnic School, Ecuador
National Society for Earthquake Technology, Nepal
Nepal Development Research Institute
NERC British Geological Survey, UK
Northumbria University, UK
Overseas Development Institute, UK
Oxfam GB, UK

Practical Action (International), UK
Quito Alcaldia, Ecuador
San Francisco de Quito University, Ecuador
Slum Dwellers International, Kenya
Southasia Institute of Advanced Studies, Nepal
Start Network, UK
Stockholm Environment Institute, Sweden
TED University, Turkey
Tribhuvan University, Nepal
UN HABITAT, Kenya
United Nations Educational, Scientific and Cultural Organization, France
University College London, UK
University of Bristol, UK
University of East Anglia, UK
University of Edinburgh, UK
University of Leeds, UK
University of Nairobi, Kenya
University of Nottingham, UK
University of Plymouth, UK
University of Reading, UK
University of York, UK
Willis Towers Watson, UK
XL Catlin Insurance Company SE, UK



©Dr Andy Bell

Water Security and Sustainable Development Hub

■ Eighty per cent of the world's population live in areas threatened by water security yet efforts to resolve this are repeatedly thwarted by pressures such as pollution, extreme weather, urbanisation, over-abstraction of groundwater and land degradation. This Hub takes a broad view of water systems to explore the challenges and barriers to water security from the impact of different technical, social, cultural and environmental values of water through to the consequences of fragmented water governance. It will tackle these barriers by providing a forum, open to all stakeholders, to jointly question, discuss, and construct new ideas to resolve water security issues.

“

Ensuring water security at scale is of primary importance for Ethiopia's development agenda. This Hub will generate and collate vital scientific evidence, and engage with local communities, catchment managers and key government ministries to guide the national development policy and practice.”

Dr Tena Agumassie, Water and Land Research Centre,
University of Addis Ababa, Ethiopia

KEY FACTS

£17.7M

12 partner countries

55 partner organisations

Lead organisation: Newcastle University

Principal Investigator: Professor Richard Dawson



Geographical focus: South America, East Africa
and South Central Asia and South East Asia

Contact details: Professor Richard Dawson
richard.dawson@newcastle.ac.uk

Partner Organisations

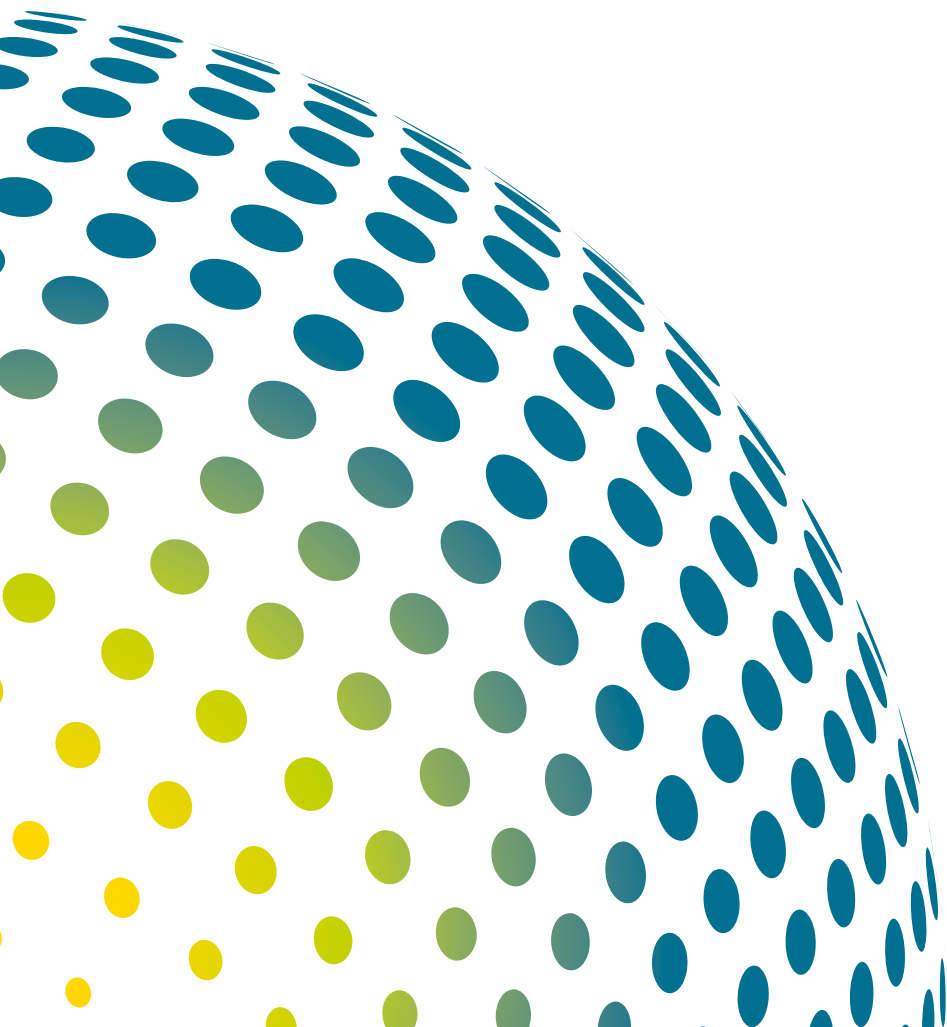
Abay River Basin Authority, Ethiopia
Addis Ababa University, Ethiopia
Association of Community Organizations
for Water Utilities and Sanitation
in Colombia
Awash River Basin Authority, Ethiopia
Binary Asylum, UK
Central Water Commission of India
Commission for Recovery of the
River Cauca Basin, Colombia
Delhi Development Authority, India
Delhi Jal Board, India
Department of Irrigation and
Drainage, Malaysia
EcoKnights, Malaysia
Envirowatch Ltd, UK
Global Flood Partnership, Italy
Green Earth Society, Malaysia
Green Shakti Foundation, India
Indah Water Konsortium, Malaysia
Indian Council for Research on International
Economic Relations
Indian Institute of Technology Delhi
International Center for Biosaline
Agriculture, Dubai
International Commission on Irrigation
and Drainage, India
International Society for Photogrammetry
and Remote Sensing, Germany
International Water Association, UK
International Water Management Institute,
Sri Lanka
Matrix Development Consultants, Kenya
Ministry of Agriculture and Natural
Resources Ethiopia
Ministry of Earth Sciences, India
Ministry of Health, Malaysian Government
Ministry of Science and Technology, India
Ministry of Water, Irrigation and Electricity
of Ethiopia

Municipal Companies of Cali, Colombia
National Capital Region Planning
Board, India
National Water Services Commission,
Malaysia
Newcastle University, UK
Ove Arup and Partners Ltd, UK
Oxfam GB, UK
Regional Council for Environmental Policy
and Water Resources, Colombia
Rift Valley Lakes Basin Authority, Ethiopia
SAJ Ranhill, Malaysia
School of Planning and Architecture
Delhi, India
Syarikat Air Johor - Johor Water
Company, Malaysia
The Centre for Urban and Regional
Excellence, India
The Flow Partnership, UK
The World Bank, USA
TickTock Games Ltd., UK
UN-Habitat – United Nations Human
Settlements Programme, Kenya
University of Cauca, Colombia
University of Leeds, UK
University of Oxford, UK
Universiti Teknologi, Malaysia
Universidad del Valle, Colombia
Valle La Unidad Ejecutora de Saneamiento
del Valle del Cauca, Colombia
WWF, South Africa
Waterlat, UK
Wolf and Wood, UK
World Health Organization, Switzerland



©David Walker

UK Research
and Innovation



www.ukri.org

 @UKRI_News

© UKRI February 2019